

## **The Pro-Rectorate of Culture and Extension at USP (PRCEU)**

The Pro-Rectorate of Culture and University Extension (PRCEU) is the body that develops cultural and extension policies at the University of São Paulo, functioning as an open channel for dialogue between USP and society.

# USP MAIN ACTIVITIES

## RESEARCH

*generation of knowledge*



## EXTENSION

*engagement with  
society*



## EDUCATION

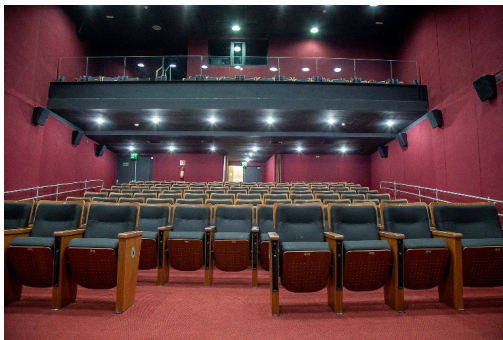
*knowledge transmission*



# **We connect the University with the public through four main lines of action**

- 1 - Through Cultural Centers and Bodies maintained by the PRCEU
- 2 - Through Programs directed to the needs of the society and its wellness
- 3 - Through a portfolio of courses and activities directed to the improvement of our students' engagement with the society
- 4 - Through the implementation of research groups organized in Support Centers for Culture and Extension Activities (NACEs)

## 10 Cultural Centers and Bodies maintained by the PRCEU



Biblioteca Brasileira Guita e José Mindlin (BBM)  
Auditório Camargo Guarnieri

Parque de Ciência e Tecnologia (CienTEC)  
Centro Universitário Maria Antonia (CEUMA)

Centro de Preservação do Patrimônio (CPC)  
Engenho São Jorge dos Erasmos





**Lorena**



**Bauru**



**Pirassununga**



**Santos**



**Piracicaba**



**São Carlos**



**Ribeirão Preto**

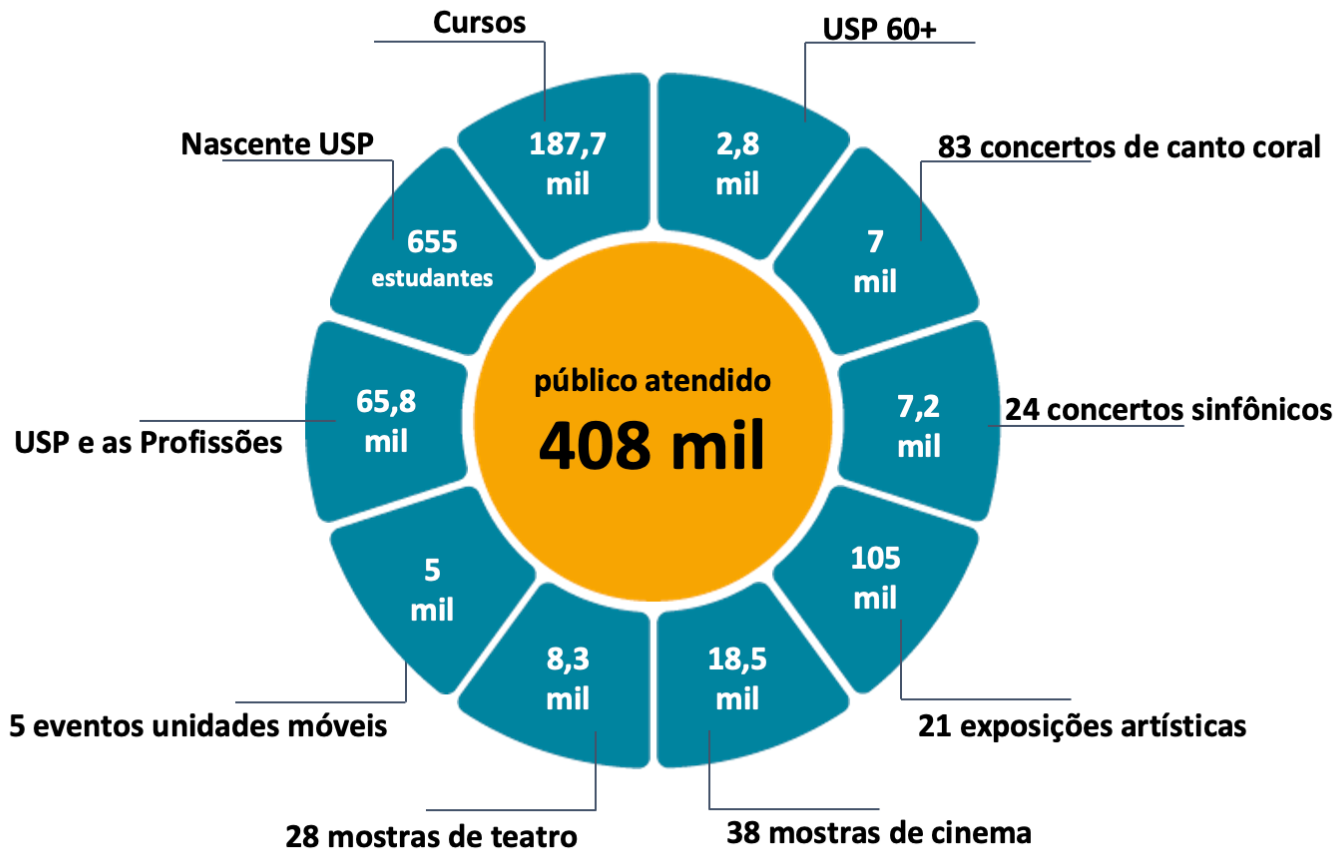


**São Paulo**



# The Pro-Rectorcy of Culture and Extension at USP (PRCEU)

PRCEU in numbers





## University of São Paulo Theater

The critically acclaimed University of São Paulo Choral group has achieved public recognition due to its varied repertoire combining both Brazilian and worldwide music. It holds five awards from the Paulista Association of Art Critics (APCA).

## University of São Paulo Theater

The University of São Paulo Theater aims to disseminate the performing arts in its various manifestations and forms of expression, to encourage the development of university theater groups, and to provide, through theater, the integration between the community inside and outside the University, in its own projects and in partnership with other units.





## “Paulo Emílio” USP Movie Theater

The “Paulo Emílio” USP Movie Theater (CINUSP) is a movie theater that hosts film screenings, debates, premieres and other activities oriented towards both the academic community and society.



## USP Symphonic Orchestra

Founded in 1975, the USP Symphonic Orchestra (OSUSP) plays a vital role in the university context.

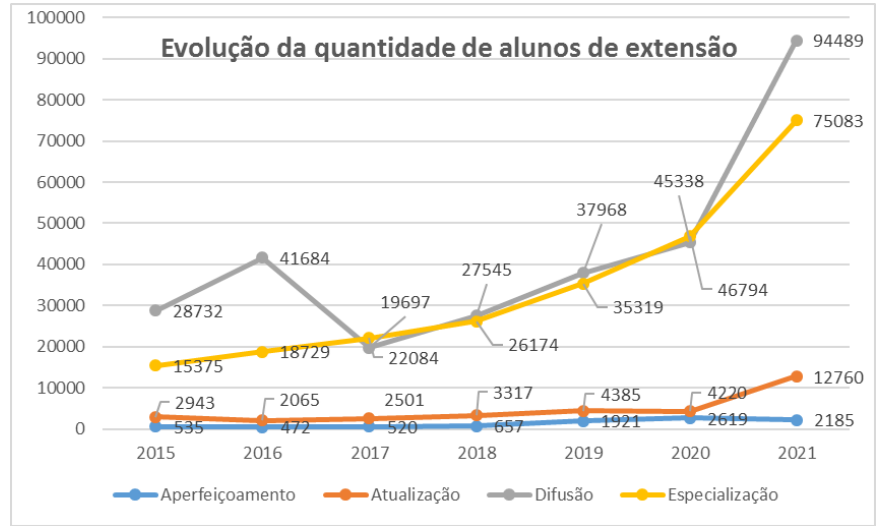
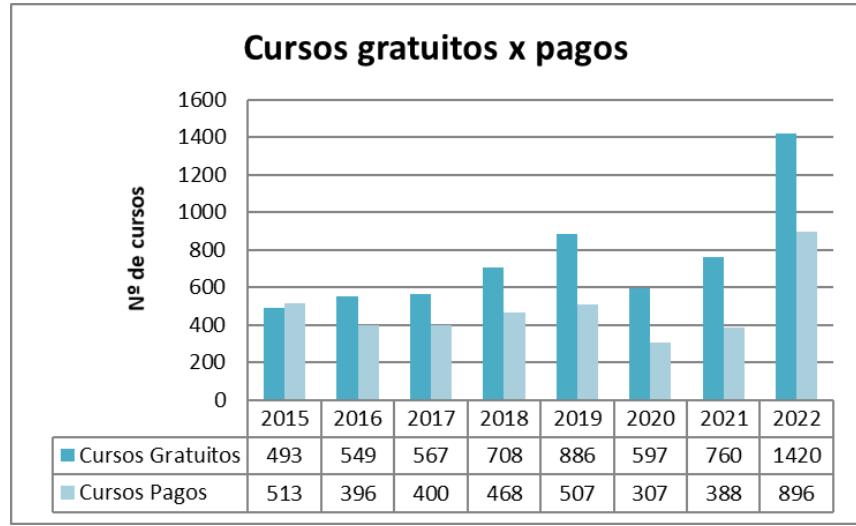
With extensive programming, the Orchestra plays on national and international tours, releases albums, organizes composer and regency contests, participates in opera montages and performs with some of the most celebrated conductors and soloists from Brazil and the world.





# We connect the University with the public through four main lines of action

3 - Through a portfolio of courses and activities directed to the improvement of our students' engagement with the society



More than 94.000 students distributed in 2.300 courses

# We connect the University with the public through four main lines of action

2 - Through Programs directed to the needs of the society and its wellness

## Open University for the Third Age

Inserts the elderly in academic activities, especially those who had no opportunities to study when young

Promotes interchange between old and young people

More than 100,000 inscriptions since 1994



## Cultural Tour

Free bus routes at the USP campus, museums and historical points of the city of São Paulo accompanied by expert guides.





## USP and the Professions

Professions Fair: twice a year, alternating the main campus and other campuses

2022: 80,000 people at São Paulo campus



# We connect the University with the public through three main lines of action

4 - Through the implementation of research groups organized in Support Centers for Culture and Extension Activities (NACEs)

## TWO EXAMPLES

**SUPPORT CENTER FOR THE DIFFUSION OF INFORMATION ON THE NATIONAL COMMISSION ON TRUTH (BRAZIL) - NACE CNV-BRAZIL**  
*(NÚCLEO DE APOIO À DIFUSÃO DE INFORMAÇÕES SOBRE A COMISSÃO NACIONAL DA VERDADE (BRASIL) - NACE CNV-Brasil)*

**SUPPORT CENTER FOR INTERNATIONALIZATION - NAI**  
*(Núcleo de Apoio à Internacionalização – NAI)*

North Carolina State University



University of Wollongong



UGPN  
A common  
space for  
cultural  
interactions!

University of Surrey



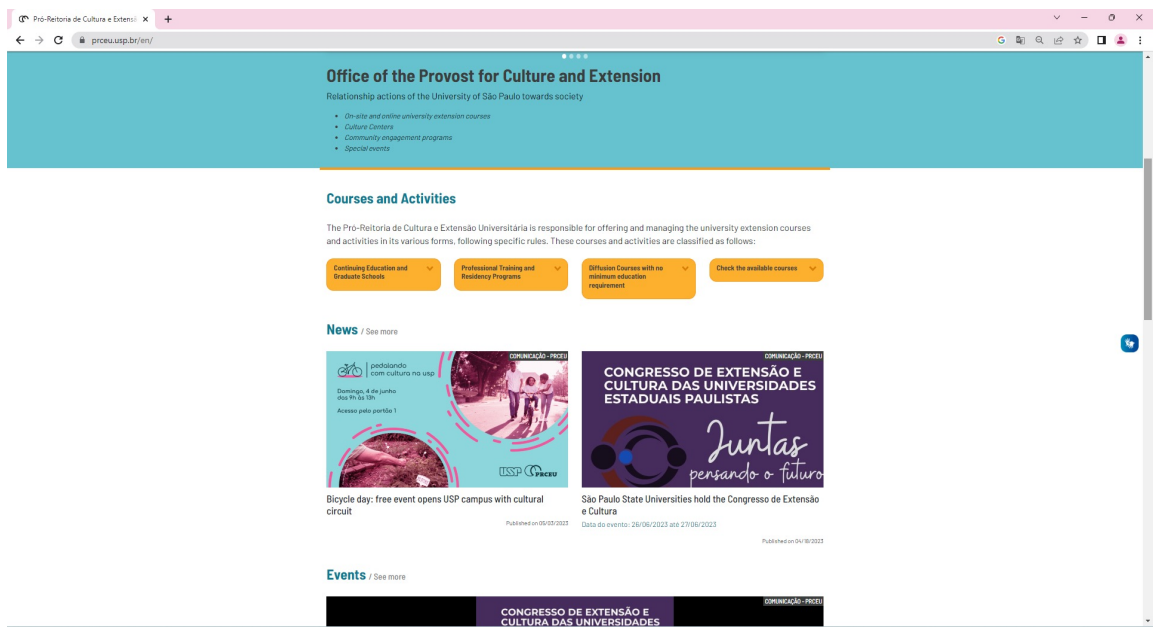
University of São Paulo





# Thank you!

<http://prceu.usp.br/en/>



The screenshot shows the website for the Office of the Provost for Culture and Extension at USP. The page features a teal header with the office name and a list of services: on-site and online university extension courses, cultural centers, community engagement programs, and special events. Below this is a section for 'Courses and Activities' with four orange buttons: 'Continuing Education and Graduate Schools', 'Professional Training and Residency Programs', 'Diffusion Courses with no minimum education requirement', and 'Check the available courses'. The 'News' section includes two articles: 'Bicycle day: free event opens USP campus with cultural circuit' and 'São Paulo State Universities hold the Congresso de Extensão e Cultura'. The 'Events' section at the bottom features a banner for the 'CONGRESSO DE EXTENSÃO E CULTURA DAS UNIVERSIDADES ESTADUAIS PAULISTAS' with the slogan 'Juntas pensando o futuro'.